

No front of room, single table in middle of room, multiple teaching walls, no dominant 'head of the table'.

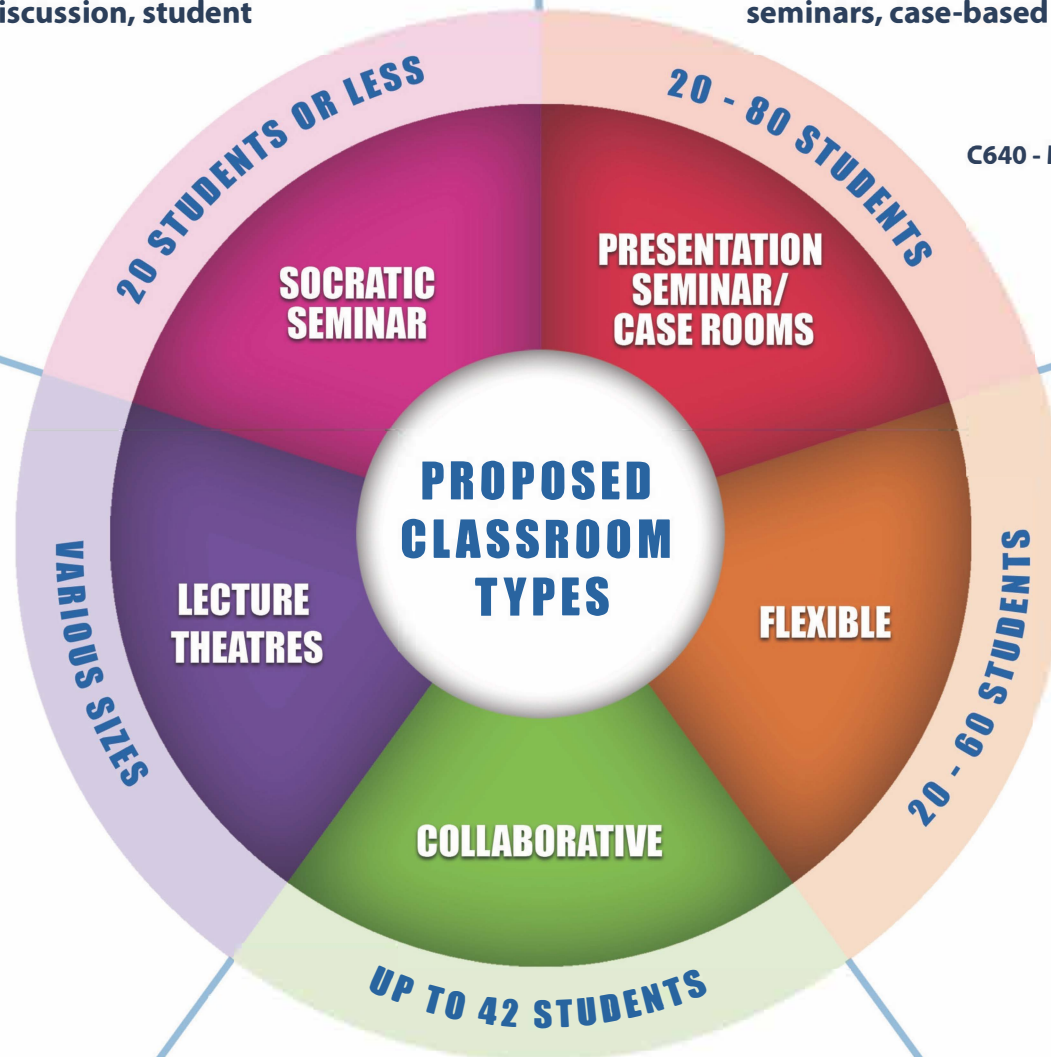
This type of room is used for Socratic seminars. Will also accommodate class discussion, student presentation.

examples  
A832 - W8xx Fine Arts - Boardroom

Tiered floor, teaching wall at front of room, curved fixed tables, should accommodate technology-mediated presentations and off-site presenters.

This type of room is used for presentation-based seminars, case-based courses. Will also accommodate lecture, class discussion, Q&A.

examples  
C640 - Markin Case Rooms M1040,1060,1090



All have teaching wall at front of room and tiered floors.

1 Row per tier | 80-300  
• Fixed tables with movable chairs (eg. PE250, 275)

2 Rows per tier | 60-120  
• Fixed tables with movable chairs (eg. TH201,204)

Auditorium | 200-300  
• Theatre seating with tablet arms (eg. Not yet - NASB)

This type of room is used for traditional lecture-style classes. Will also accommodate class discussion, Q&A.

Flat floor, front of room, multiple teaching walls, flexible tables & chairs or Node chairs, can easily be reconfigured for various teaching styles within single class period.

This type of room is used for mixed pedagogy but primarily active-learning teaching styles.

examples  
L1050 - W565

Flat floor, SCALE-UP type with fixed D-shaped tables, no front of room, may include collaboration technology and lots of whiteboards.

This type of room is used for group-based active-learning style classes. example AH177