

# Reuters 3000 Xtra

# The faster, smarter way to analyse the global markets





REAL TIME

IMPROVED USER INTERFACE

CONTROL

INCREASED RANGE

TOP NEWS

INTUITIVE

HISTORICAL

ALERTS

ANALYTICS

CUSTOM BUILD

## Reuters 3000 Xtra

The faster, smarter way to analyse the global markets.

Reuters 3000 Xtra is a high-speed, high-performance information service for financial professionals.

Designed for the most demanding users in business, it delivers a potent combination of real-time information and powerful analysis tools.

Whether you need to make a split-second judgement, or analyse a financial instrument in depth, Reuters 3000 Xtra equips you to make the best trading and investment decisions.

With Reuters 3000 Xtra, you can:

---

**Follow market action as it happens** – award-winning real-time news from Reuters together with a vast range of financial data, means Reuters 3000 Xtra keeps you up to speed no matter which markets you follow

---

**Perform complex analysis easily** – pre-built models make standard calculations easy whilst Reuters 3000 Xtra's flexibility enables you to create your own analyses, whether simple or complex

---

**Research quickly and efficiently** – with historical data, news, and powerful charting capabilities, you can build a comprehensive picture of an instrument or market

---

**Communicate with customers and colleagues** – integrated, highly secure Reuters Messaging means you can exchange ideas and strategies with contacts across the markets

---

**Stay in touch with the markets wherever you are** – Reuters 3000 Xtra Companion enables you to follow the markets on the internet or your PDA

---

---

#### **Award-winning real-time news from Reuters...**

With 2,000 reporters worldwide and a focus on business and finance, Reuters delivers fast and complete coverage of money, forex, debt and commodities and energy markets. In equity markets, we cover the majority of worldwide exchanges and combine interviews and analysis with extensive third-party feeds. News items and alerts are fully integrated with market data, allowing quick cross-referencing between price quotes, graphics, and news.

#### **...organised for 'at-a-glance' viewing...**

Our news is indexed and organised into intuitive displays linked to related news, quotes and charts so you can see at a glance how a market or instrument is performing.

#### **...and supported by 550 top news sources**

Global Press Watch brings major press sources from around the world to your screen to 'round out' your view of the markets.

#### **Comprehensive real-time market data**

Reuters leads the world in terms of the breadth of markets covered and the depth of detail available across all asset classes. From forex to fixed income to derivatives, we cover a vast range of market data from exchanges and contributors.

---

#### **With ready-made analyses...**

Reuters 3000 Xtra contains 120 pre-built Xtra Market Suite (XMS) models providing analysis, pricing and modelling across FX and money markets, equities, fixed income and commodities and energy.

#### **...or your own customised calculations**

Screens can be easily customised, and a library of powerful functions enables data to be managed and analysed from within Microsoft® Excel.

---

#### **Track financial data trends...**

Historical data across asset classes can be exported for analysis or charted using our own graphics package.

#### **..and see what the press have been saying**

The press database within Reuters 3000 Xtra contains two years of news history so you can research companies' activities easily.

---

Reuters Messaging provides highly secure, high-performance instant messaging integrated into Reuters 3000 Xtra so you can discuss markets and strategies or broadcast information to clients and colleagues.

---

With Reuters 3000 Xtra Companion you can follow the markets when you're out of the office via an internet-connected PC or a handheld computer.

---

Reuters 3000 Xtra means you can act with the confidence that your decisions are backed up with the best information and analysis. And if you are in a customer-facing role, you can spot opportunities more easily and deliver better service to customers.

---

# Equities



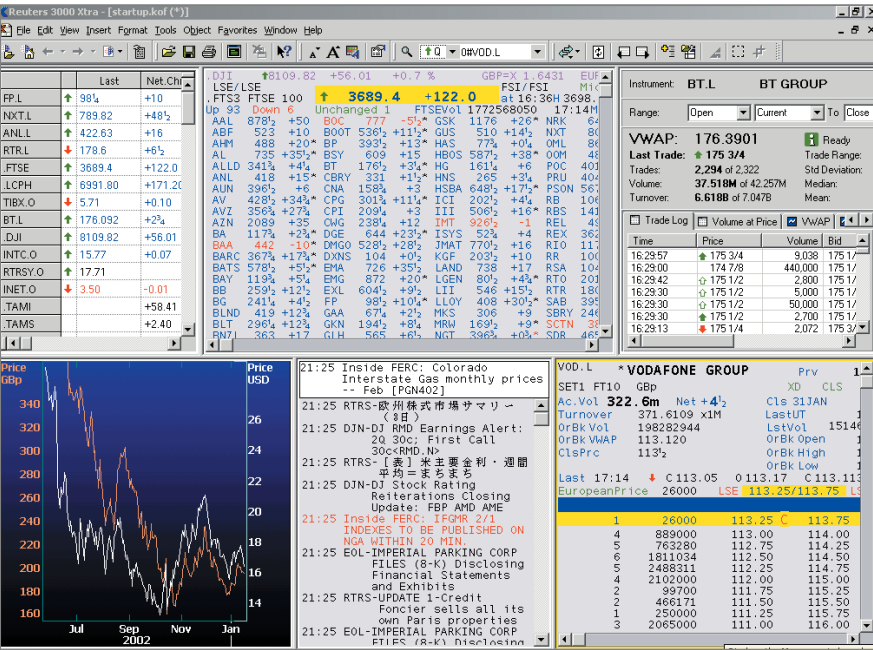
The complete equity market picture from research to execution

## Follow market action

Reuters offers comprehensive news coverage of global equity markets with fast-breaking news on active shares, market reports, economic updates, research and regulatory releases. Additionally, commentary from 550 press sources helps you to build a complete view of the markets.

And with real-time prices from 166 exchanges worldwide you can set up watchlists with summary prices on up to 40 user-defined stock groupings. VWAP dynamic time and sales data helps you to get a clear view of the market.

You can track upcoming events with the 'Future Events' model, that covers events for G7 countries, including economic announcements, meetings, market holidays, political events, trade shows, conferences and more.



Market Data

## Perform complex analysis easily

The 'Stock Competitors' model allows you to easily compare a security to its peers using live fundamental and analytical data and employing the sector scheme of your choice.

Using the 'Equity Index Analysis' and 'Equity Sector Browser' models, you can easily analyse the constituents of an index or sector based on weighting, price performance, earnings, dividend and risk factors.

## Research quickly and efficiently

Get a full picture of a security with the 'Equity Views', which covers consensus and detailed estimates, holdings information, reports, sector and share comparisons, broker research and more...

## Manage portfolios and risk

Integrated portfolio and risk management applications mean that Reuters 3000 Xtra can help you to manage portfolio risk actively, boosting your performance and ensuring compliance with regulatory requirements.

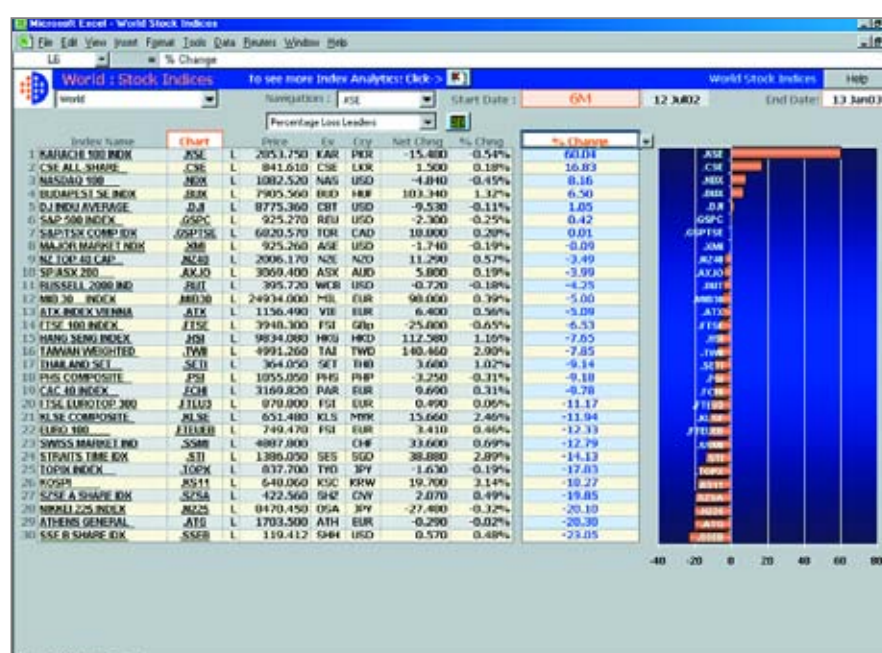
## Completing the workflow

For equities users, Reuters 3000 Xtra now provides transaction capabilities within your existing workflow.

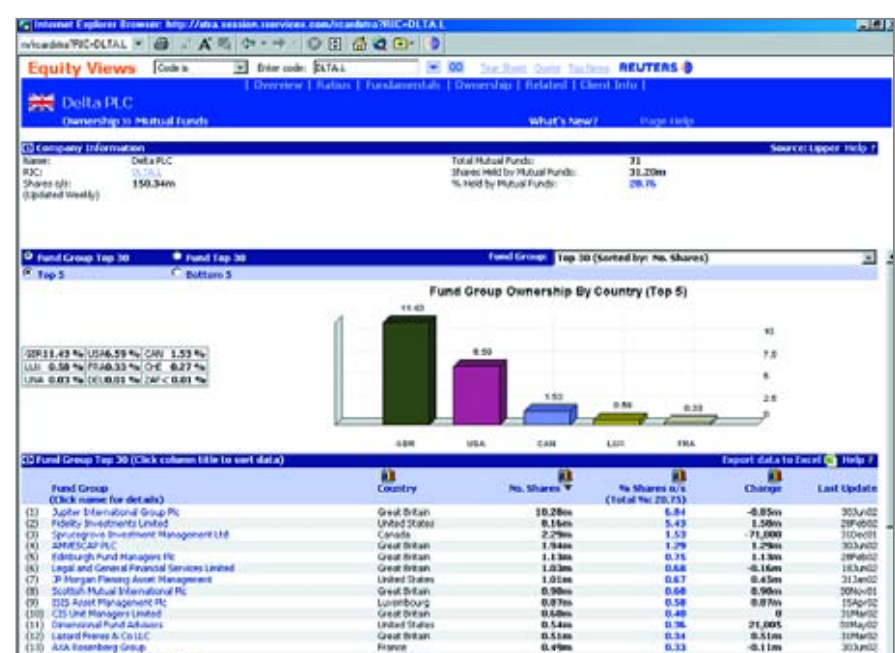
Using Institutional Order Entry (IOE), users can route orders directly to a preferred broker or to an execution venue such as Instinet.

## Communicate with customers and colleagues

With Reuters 3000 Xtra Messaging you can discuss markets and strategies with your counterparties, or broadcast information to clients and colleagues.



World Stock Indices



Equity Views

# Fixed income



Fixed-income market action, research, analysis and execution all in one place

## Follow market action

Whether it's a jumbo bond, a national budget or a credit downgrade, Reuters brings you the story as it happens. Our Polling Unit gives you advance notice of the news with forecasts on bond yields, short term interest rates, currencies and economic indicators.

Our daily World Bonds and Emerging Markets reports – which include dollar, yen and euro debt – then explain the implications of market events.

And with real-time prices from over 1,800 contributors you can watch market action as it unfolds.

Reuters 3000 Xtra can then make clear the impact of the market action on the yield curves, the indices and your hedges.

A screenshot of the Reuters 3000 Xtra Bond Overview window. The window displays a detailed overview of a bond, including its basic information, market data, and a list of dealers. The bond is a 5.5% Euro area government bond, maturing on 25 April 2007. The window is divided into several sections: Bond Basics, Bond History, Market Conventions, and Dealers. The Dealers section lists various financial institutions and their respective bid and ask prices for the bond.

System	AF term & conditions	Market Conventions	Trade + 30	Original Issue
Index	OATS	Settlement Rule	Trade + 30	Date of Issue
Country	France	Value Date	Same as settlement	Issue Amt
Industry	Government - Sovereign	Ex-dividend rule	Same as coupon	Date Current Aid
Par	100%	Day Count	Actual/Actual	Current Aid
Maturity Date	25-Apr-07	Yield Convention	Yield to Maturity	Price
Redemption	Bullet	Yield	Without Accrual	Yield
Redemption Value	100% of par	Quoted	Without Accrual	Validation
Principal Currency	EUR	Min. Denomination	1	Date
Market of Issue	European Monetary Union	Min. Increment	1	Close Price
Coupon	5.5	Price Rounding	Round to 2 places	Yield
Coupon Currency	EUR	Issue Information		Post-EMO
Coupon Type	Fixed	Bearer / Reg.	Registered	Clearing
Frequency	Annual	Lead Manager	Yes	ESMA
Dated Date	25-Apr-96	Tenor	10y	ESMA
First Coupon	25-Apr-97	Program	Yes	Post-EMO Common code
Last Full Coupon	25-Apr-07	Private Placement	No	Post-EMO EBN
		Warrants	None	Post-EMO Sedol
				Post-EMO Scovam

Source	OT	ACT	YLD	EC	YLD	CT	TR	1	VALUE	DT	HT	CLOSE	TRD	PRC	1
FR057057+GZBP	107.11	3.775	3.787						100.84						
FR057057+MELP	107.13	3.781							100.870						
FR057057+	107.140	3.792	3.773						100.76						
FR057057+QBP	107.14	3.782							100.78						
FR057057+MSP	107.13	3.781							100.78						
FR057057+CRP	107.15														
FR057057+CSL	107.14	3.780	3.774												
FR057057+BARL	107.123	3.802	3.782												

Bond Overview

Perform complex analysis easily

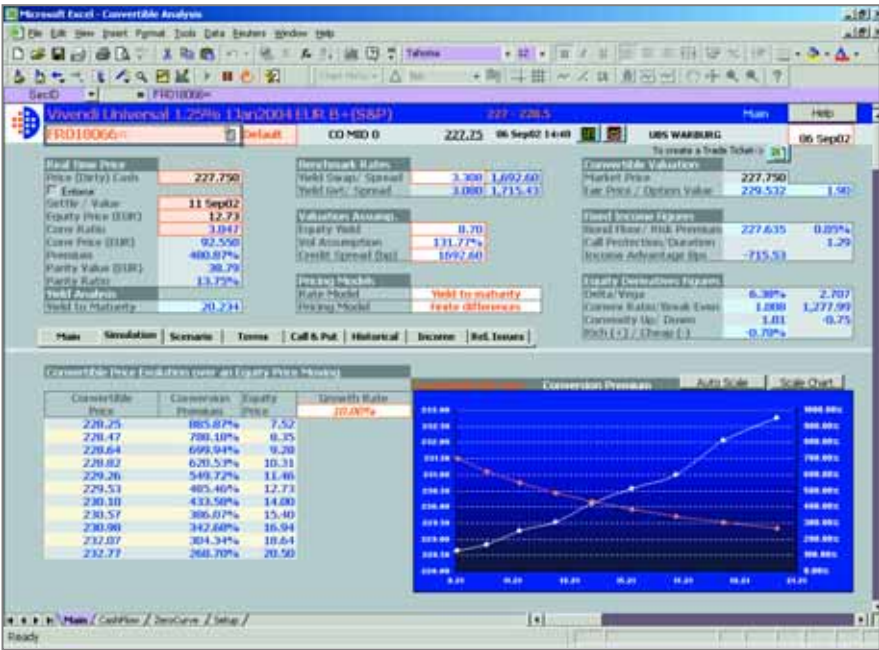
Reuters 3000 Xtra makes it easy to evaluate and compare securities. You can search by issuer name, codes or TCM from anywhere within the service. Real-time analytics are available both within price quotes and in a series of comprehensive, readily accessible models enabling you to compare and evaluate issues easily.

Further displays providing credit and sector curves and 'like for like' analytical displays by sector, issuer and rating complete the picture.

Research quickly and efficiently

Reuters 3000 Xtra covers over 500,000 bonds from more than 100 countries. You can quickly get a full descriptive picture of a bond, its issuer and the credit-worthiness of either. This is supported by easy access to instrument-specific web services covering, for example, ownership information or the original prospectus.

You can navigate from news stories to quotes from the bond issuer with a single click, or from quotes to issuer- and industry-specific news.



Convertible Analysis

Manage portfolios and risk

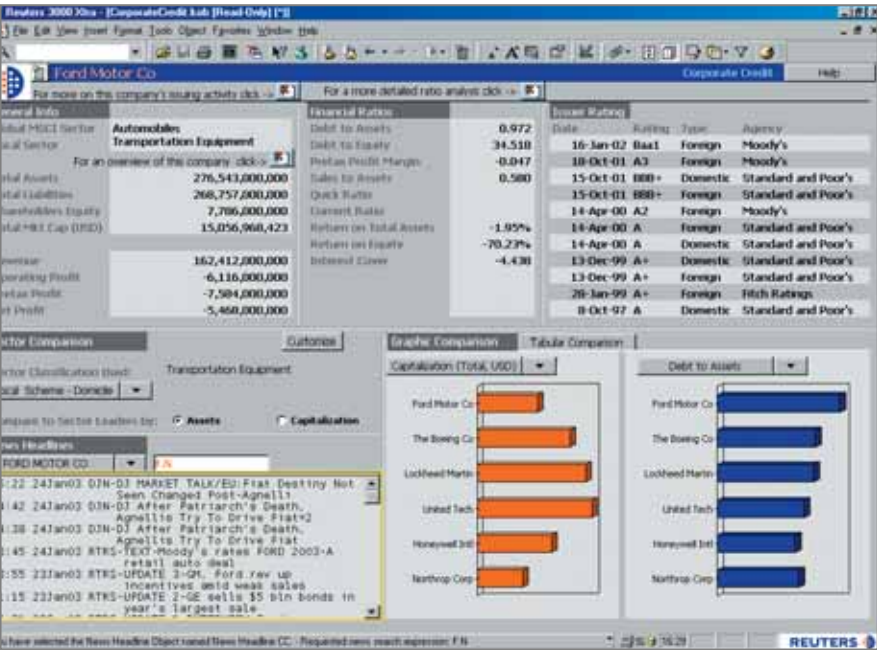
Integrated portfolio and risk management applications mean that Reuters 3000 Xtra can help you to manage portfolio risk actively, boosting your performance and ensuring compliance with regulatory requirements.

Click to trade

Users can trade with counterparties directly from real-time price displays and other integrated access points on their Reuters 3000 Xtra screen. For example, authorised users can 'click-to-trade' directly on Deutsche Bank's web autobahn® trading platform from real-time tradable prices on over 5,000 securities in 20 currencies.

Communicate with customers and colleagues

With Reuters 3000 Xtra Messaging you can discuss price movements and switches with your colleagues and trade ideas with your customers.



Corporate Credit

# FX and money markets



ALERTS

CONVENIENCE

CONTEXT

HISTORICAL

COVERAGE

CONTROL

An unsurpassed view of the FX and money markets combined with custom analysis tools

## Follow market action

Reuters gives you a commanding view of FX and money markets, with round-the-clock news coverage that beats the competition on 70% of economic and policy announcements.

You can view market movements with real-time prices from market makers and broker sources across major currency and money markets. We cover 175 currencies globally and cover instruments from Spot, Forwards and Depos to Swaps, Options and other derivatives. You can also jump quickly to related news from links within instrument data.

We offer data from over 2,000 contributors and provide official daily market fixings for over 50 currencies.

Reuters foreign exchange data also covers:

- Interest rate swaps and currency swaps
- Fixings e.g. ISDA,BBA
- FX volatilities, risk reversal and strangles

Data Content

Reuters is the only vendor to carry both Reuters matching and EBS executed prices on FX spot data.

Reuters Treasury News also provides easy, single-key access to headlines relating to the instrument you are watching. When viewing any of the following as a single quote, part of a chain, or in a personal quote list, Reuters links you directly to the relevant news by pressing a single button: F9.

- Spot rates
- Cross rates
- Deposit rates
- Forwards
- Sovereign debt instruments
- Yield curves

## Perform complex analysis

Reuters 3000 Xtra enables you to customise your analysis of the market by using your own in-house prices or those of our contributors. The pre-built fair value calculations cover a broad range of scenarios from simple day counts to swaps and options calculations.

For example, you can calculate and display swap points and outright in real time for any currency or cross-currency pair out to 10 years plus handles broken dates and forward forwards.

## Communicate with customers and colleagues

With Reuters 3000 Xtra Messaging you can discuss markets and strategies with your counterparties or broadcast information to clients and colleagues.

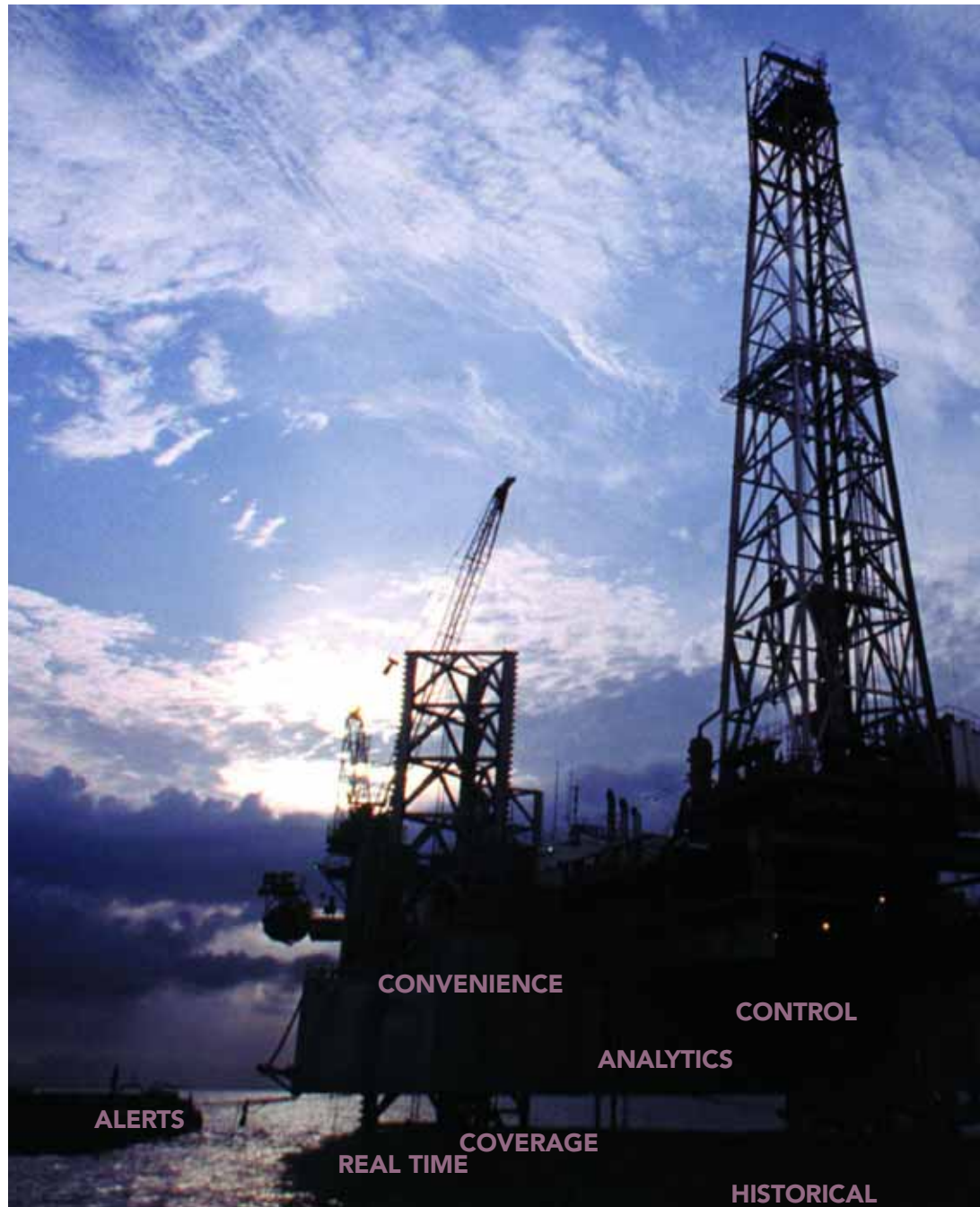
G7 MACROECONOMIC DATA OVERVIEW									
G7 ECONOMIC INDICATORS									
TIME	INDICATOR	UNIT	LAST	PREV	CHG	UNIT	LAST	PREV	CHG
0845 IT	Reuters/ADACI PMI	Oct	50.7	49.8	Ind	48.7/50.7	9	50.5	N/A
0850 FR	CDAF/Reuters PMI	Oct	49.0	49.9	Ind	49.3/50.6	9	50.3	N/A
0855 DE	BME/Reuters PMI	Oct	48.4	46.2	Ind	45.0/50.5	14	46.0	N/A
0900 E12	Reuters E12 PMI	Oct	49.1	48.3	Ind	46.0/49.0	28	48.9	N/A
0930 GB	CIPS/Reuters PMI	Oct	50.5	50.2	Ind	49.3/50.5	13	50.2	50.3
0930 GB	ECRI Inflation Gau	Sep	105.3	N/A	Ind	N/A	-	104.9	105.1
1330 US	Avg Hourly Earning	Oct	0.2	0.3	Pct	N/A	-	0.3	N/A
1330 US	Avg Work Week	Oct	34.1	34.2	Hrs	N/A	-	34.3	N/A
1330 US	Payroll Employ	Oct	-5.0	7.0	K	-50.0/40.0	22	-43.0	N/A
1330 US	PCE Price Index	Sep	0.2	N/A	Pct	N/A	-	0.2	N/A
1330 US	Personal Income	Sep	0.4	0.5	Pct	0.2/0.7	16	0.4	N/A
1330 US	Personal Spending	Sep	-0.4	-0.2	Pct	-0.5/0.3	12	0.3	N/A
1330 US	Unemployment Rate	Oct	5.7	5.8	Pct	5.6/5.9	22	5.6	N/A
1500 US	Construct Spend	Sep	N/A	0.2	Pct	N/A	-	-0.4	N/A
1500 US	ISM (formerly NAM)	Oct	N/A	48.9	Ind	48.0/50.5	22	49.5	N/A
1530 US	ECRI Weekly Index WE	N/A	N/A	N/A	Ind	N/A	-	N/A	N/A
1540 US	FIBER Inflation	Oct	N/A	N/A	Ind	N/A	-	94.8	N/A
1610 US	ECRI Inflation Gau	Oct	N/A	N/A	Ind	N/A	-	113.3	N/A
2330 JP	ECRI Inflation Gau	Sep	N/A	N/A	Ind	N/A	-	N/A	N/A
N/A	E12 ECRI Inflation Gau	Sep	93.0	N/A	Ind	N/A	-	92.5	N/A
N/A	DE ECRI Inflation Gau	Sep	80.8	N/A	Ind	N/A	-	78.5	78.6
N/A	FR ECRI Inflation Gau	Sep	102.2	N/A	Ind	N/A	-	102.3	102.1
N/A	IT ECRI Inflation Gau	Sep	98.2	N/A	Ind	N/A	-	98.3	98.3
N/A	US Car Sales	Oct	N/A	5.5	Mln	5.3/6.0	15	5.6	N/A
N/A	US Truck Sales	Oct	N/A	7.3	Mln	7.0/8.1	15	7.5	N/A
N/A	FR Market and Public					[HOL/DIARY]			

G7 Economic Indicators

Euro vs British Pound Forwards from Swap Points									
Swap Points and Outrights									
Period	Start Date	End Date	Days	Swap Points	Outrights	Swap Points	Outrights	Swap Points	Outrights
DN	12 Jan 03	14 Jan 03	3	-0.4000	-0.4000	-1.2000	-0.8000	0.0402	0.1912
IN	14 Jan 03	15 Jan 03	1	-0.4000	-0.4000	-1.2000	-1.2100	0.2125	0.2024
SW	15 Jan 03	22 Jan 03	7	-3.2100	-3.1600	-8.6000	-8.5000	1.4824	1.5375
2W	15 Jan 03	29 Jan 03	14	-6.3800	-6.2800	-16.4300	-16.4300	2.7702	2.8202
3W	15 Jan 03	05 Feb 03	21	-9.5170	-9.3645	-24.7175	-24.4825	4.1047	4.3047
1M	15 Jan 03	18 Feb 03	34	-15.3800	-15.1800	-39.7000	-39.4000	6.5718	6.8047
2M	15 Jan 03	17 Mar 03	61	-27.0000	-26.4500	-70.0000	-69.5000	11.6955	12.1443
3M	15 Jan 03	15 Apr 03	90	-38.0700	-38.3700	-102.0000	-102.0000	17.6730	18.3531
6M	15 Jan 03	15 May 03	120	-50.5000	-50.1000	-135.0000	-134.0000	23.9933	24.7059
9M	15 Jan 03	16 Jun 03	152	-62.5000	-62.0000	-170.0000	-169.0000	30.6081	31.4777
1Y	15 Jan 03	15 Jul 03	181	-72.4000	-71.4000	-200.0000	-199.0700	37.1134	38.2366
1Y1	15 Jan 03	15 Sep 03	212	-82.9000	-81.9000	-232.3237	-230.0801	43.3882	44.8837
1Y2	15 Jan 03	15 Oct 03	243	-92.7000	-91.7000	-263.6674	-261.0907	50.3709	51.8098
1Y3	15 Jan 03	15 Nov 03	273	-102.2000	-99.2000	-294.0000	-292.0000	57.5201	59.7259
1Y4	15 Jan 03	15 Dec 03	306	-109.9700	-108.6700	-324.8478	-322.4891	64.9155	66.8219
1Y5	15 Jan 03	15 Jan 04	336	-117.2000	-115.9700	-353.0217	-349.3387	71.7055	73.2346
1Y6	15 Jan 03	15 Feb 04	365	-124.0700	-121.0700	-380.0000	-377.0000	78.0002	80.3064
1Y7	15 Jan 03	15 Mar 04	395	-130.7113	-126.7246	-405.6862	-404.6862	83.1636	85.5360
1Y8	15 Jan 03	15 Apr 04	425	-137.3525	-132.3796	-430.7724	-426.3804	87.3084	89.9594
1Y9	15 Jan 03	15 May 04	456	-144.0668	-138.0968	-456.3496	-456.6465	91.2556	94.0729
2Y	15 Jan 03	15 Jan 05	734	-151.0000	-144.0000	-483.0000	-481.0000	95.4996	97.7547

Swap Points and Outrights

# Commodities and Energy



Market-leading coverage of agrimarkets, energy and metals together with powerful research and analysis

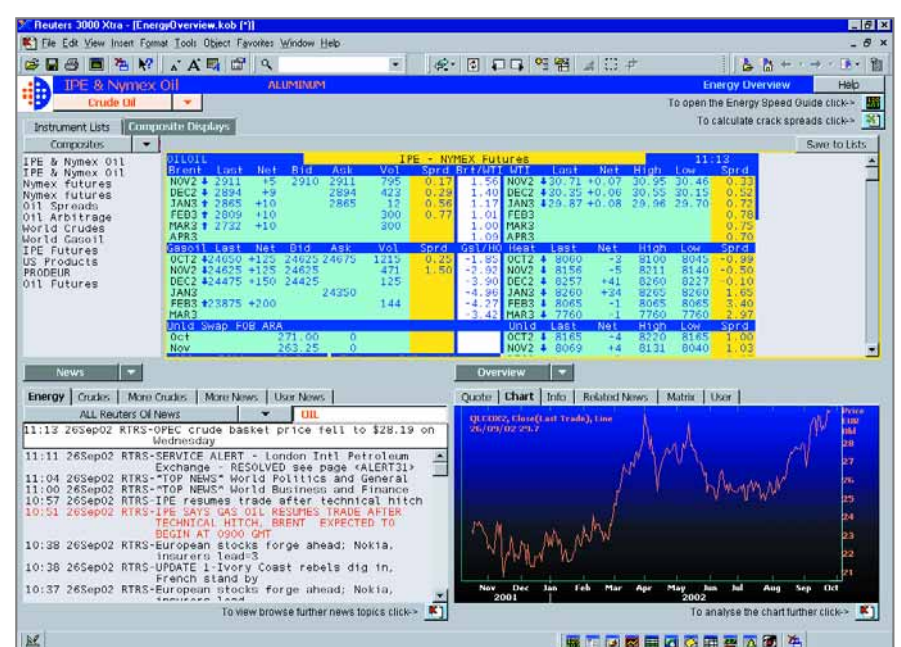
## Follow market action

Reuters 3000 Xtra gives you comprehensive energy, metals and agrimarket coverage. You can view detailed real-time or delayed pricing from every major commodities and futures exchange worldwide as well as a wide range of third-party and contributor data and extensive FX spot and cross rates.

Our specialist reporters provide timely and accurate commodities and energy news coverage to keep you informed. We deliver alerts, breaking news, and worldwide economic and political news to your desktop. Weather reports and observed, forecast and historical weather data for Europe and North America are available, together with global weather news from Reuters and Meteorlogix.

## Agrimarkets

- Best available market coverage of market events worldwide, including market statistics and information from the USDA, ICO, IGC, FO Licht, Agrokhlleb (SovEcon) and other key market organisations



Energy Overview

- Historical futures prices for both current and expired contracts
- Key physical and OTC prices to help identify trade and arbitrage opportunities

## Energy

- Historical data for futures, spot prices and key statistics such as API, EIA and EUROILSTOCK to help you identify trading opportunities
- Access to global or regional delayed energy company equity prices and details
- View data from third party providers including Platts, Petroleum Argus, PH Energy and Dow Jones

## Metals

- In-depth coverage from the LME
- All major exchange-traded base and precious group metals (PGMs) futures and options instruments in real time
- Extensive range of cash metals prices continuously collected and updated by specialist Reuters journalists
- Exclusive access to Reuters Metals Production Database

## Perform complex analysis easily

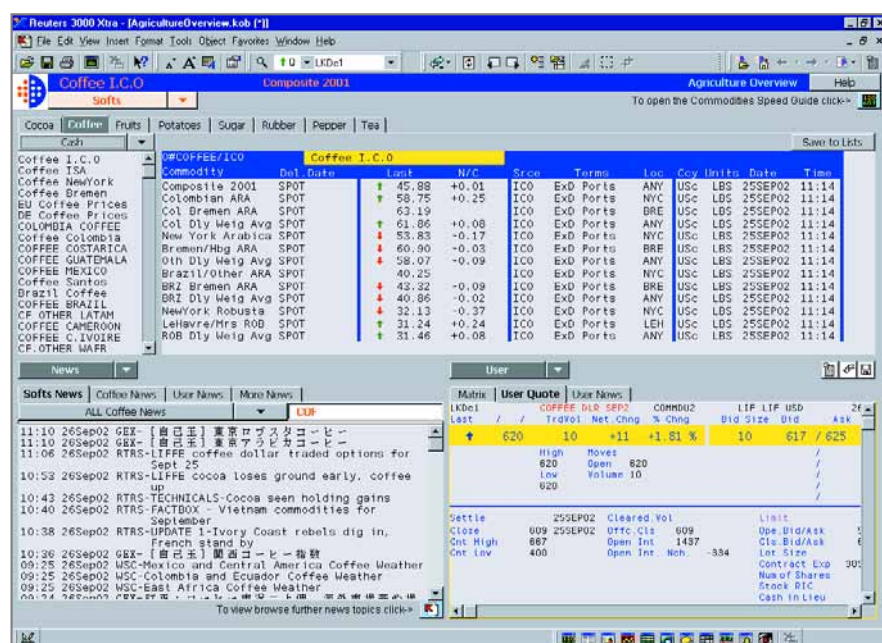
Reuters 3000 Xtra enables you to export Reuters data into an Excel environment, where you can manage and analyse the data with a library of powerful functions. As well as the ability to customise your calculations and spreadsheets we also provide pre-built models containing easy-to-use financial calculators.

## Research quickly and efficiently

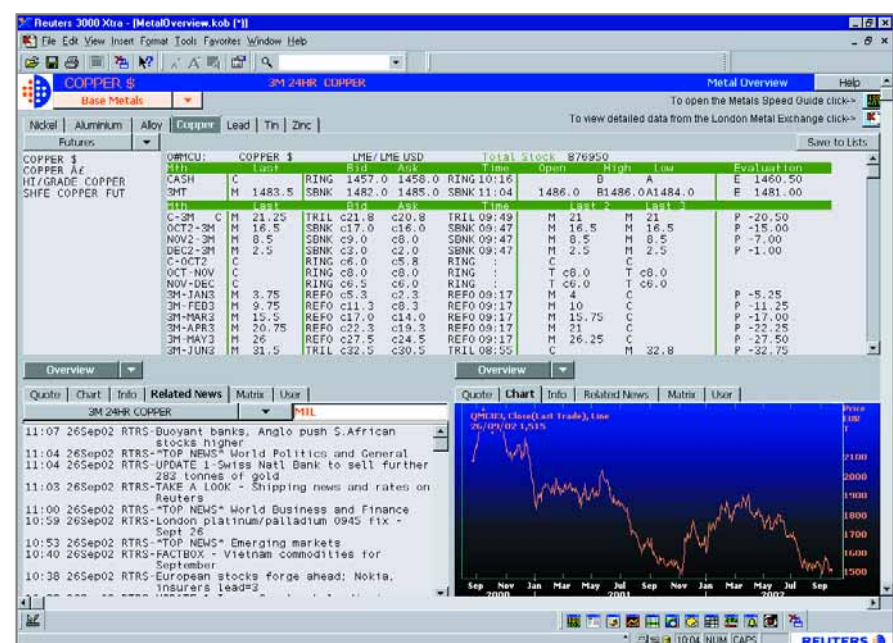
With Reuters 3000 Xtra you can mix Reuters information such as news, prices and charts with data from other internal and external sources to bring all the information you need to your fingertips.

## Communicate with customers and colleagues

With Reuters 3000 Xtra Messaging you can discuss markets and strategies with your counterparties, or broadcast information to clients and colleagues.

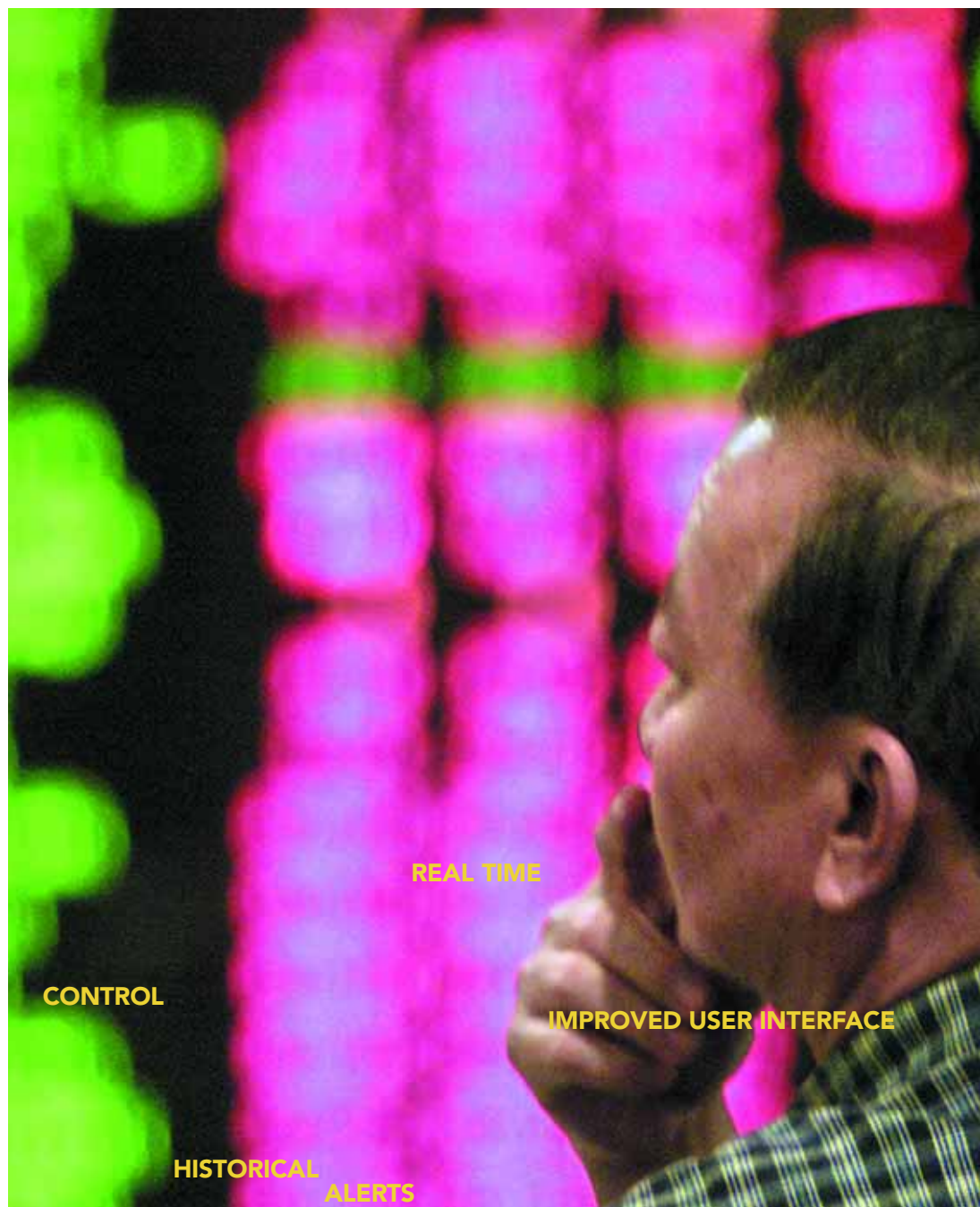


Agriculture Overview



Metal Overview

# Technical information



Reuters has many years of experience in delivering open desktop solutions to the trading arena: experience we have used in the further development of Reuters 3000 Xtra.

The latest release builds on the existing open desktop. This already provides extensive tools for the display of news, prices, charts, analytics, fundamental data and time series. It uses Microsoft ActiveX and COM standards, and web technology such as XML in both the Kobra and Excel containers. Reuters 3000 Xtra can be fed either by the new Reuters Market Data System (RMDS), Triarch, TIB (via SSL adapter), Reuters Small Site Delivery (RSSD) or Reuters Workstation Server (RWS).

This latest release of Reuters 3000 Xtra includes further enhancements to the Kobra and Excel (via PowerPlus Pro) containers, improved Microsoft desktop compatibility and more extensive use of web technology for content and navigation.

In addition, Reuters 3000 Xtra deployment options are being extended with Citrix thin-client and hosted delivery. In the near future it is intended they will also support enhanced time series for small sites connecting to a centralised Data Backup Unit (DBU).

## Installation and run-time environment

Reuters 3000 Xtra now offers more granular control over real-time settings at installation and improved upgrades via further MSI adoption including patch support. DACS settings are now shared between Kobra and PowerPlus Pro.

## Microsoft Windows compatibility

Windows XP is now supported. See later for note on small site delivery.

Greater compatibility with Office XP is provided by the integration and packaging of VBA 6.3a, which is the Office XP version of VBA with an additional patch from Microsoft for Kobra.

Office XP support is extended to the Excel high macro security level using digital certificates for all Excel macros in XMS and PowerPlus Pro. This also applies to Office 2000.

The dependency on MS Jet is also being removed, replaced by XML definitions for data dictionaries.

The installation and run-time environment has been improved in order to follow Microsoft Windows 2000/XP standards for:

- File locations
- Storage of user data and registry settings in the user profile
- Sharing of common run-time libraries
- Kobra adoption of Windows 2000 group policies for restricted access to: network drives, designated Windows applications and file open history

### Historical data retrieval and login

Historical data, for tick to yearly periods, as well as fundamental data and business logic are all accessed through the DEX Open Access interface via a single login.

### Display-building tools

Powerful displays can now be built using:

- Global VBA project support in Kobra
- Kobra 'right mouse click' customisation via VBA
- Toolbar and menu publishing for ActiveX controls into the Kobra UI frame
- Fully available AdfinX functions, which are now accessible via a COM API to Kobra VBA, Excel VBA, VB applications, C++ applications
- PowerPlus Pro time series assistant for sourcing of data via the DBU into Excel
- PowerPlus Pro real-time chain assistant for retrieval of lists of RICs associated with a chain RIC into Excel
- The Kobra Matrix and Kobra Spreadsheet VBA APIs

### Deployed Citrix thin-client delivery

Reuters has joined forces with Compaq Professional Services (part of HP) for the consulting, systems integration and lifecycle services in the specialist area of thin-client infrastructure and deployment. This will provide customers with a qualified and jointly supported 'Reference Platform'.

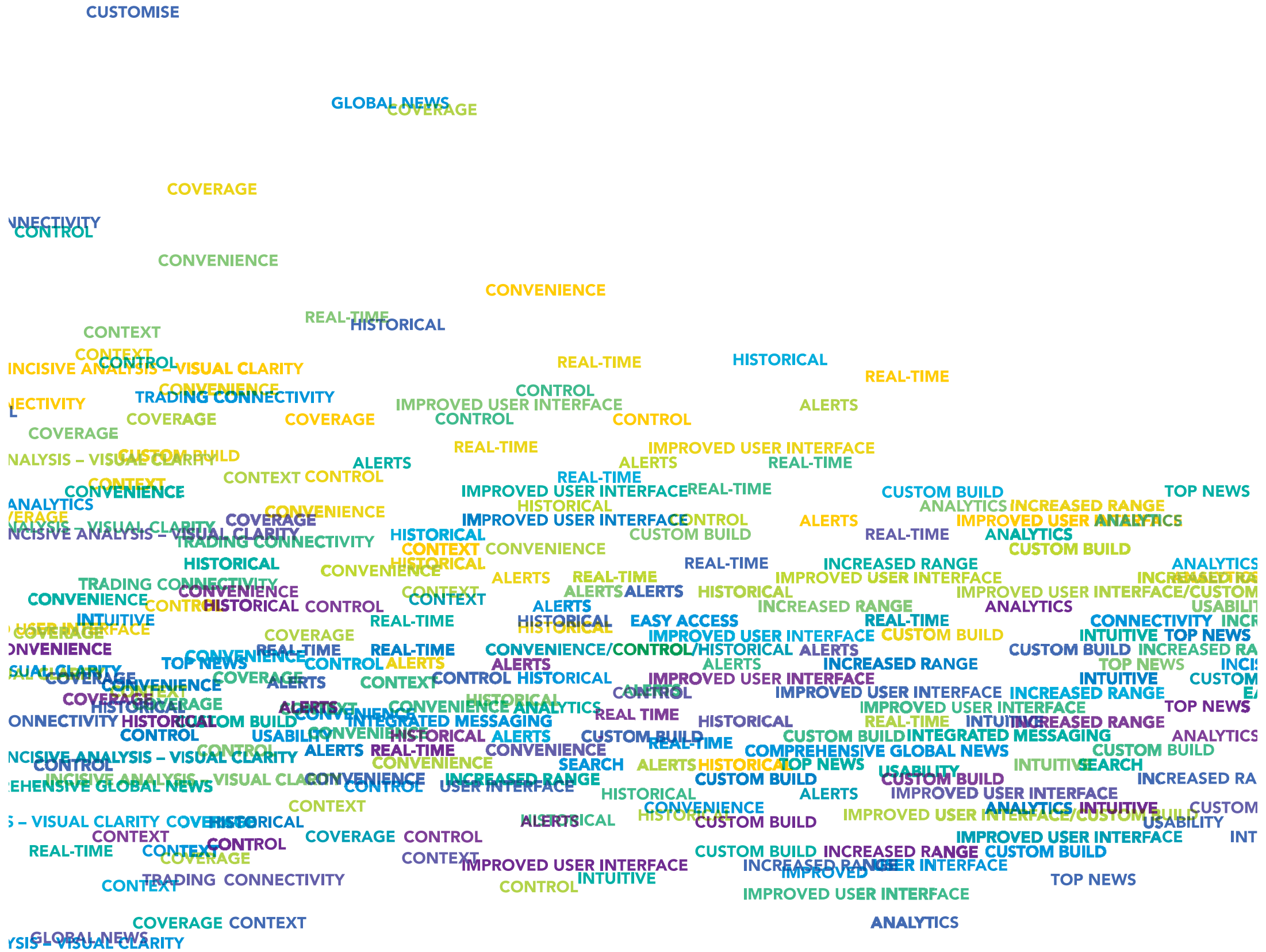
Reuters 3000 Xtra software has been qualified, tested and benchmarked by Reuters and Compaq Professional Services (part of HP) in collaboration with Citrix. According to Compaq, an organisation's total cost of ownership can be reduced by an average of 30% by deploying Reuters 3000 Xtra in a thin-client environment.

### Hosted delivery

Reuters 3000 Xtra is now available as a hosted service. A lightweight, downloadable desktop application connects over RadianzNet or the Internet to make the full suite of applications available to users, including Kobra, PowerPlus Pro and user-created files. Access is available from Microsoft, UNIX, Linux and Apple client platforms and application maintenance is handled centrally by Reuters, including templates, patches and version upgrades.

### A note on small site delivery

It is intended that support for the latest version over RSSD and on RWS without an onsite DBU will commence soon with the centralised DBU. This will provide smaller customers with Windows XP support as well as support for the Intraday Viewer and extended time series from DBU such as bond yield histories.



© Reuters 2003. All rights reserved.  
Reuters, the sphere logo, Reuters 3000 Xtra, Reuters Companion, Reuters Messaging, PowerPlus Pro, Kobra and Adfin are the trademarks or registered trademarks of the Reuters group of companies around the world.  
Microsoft Office, XP, Windows, Excel and Outlook are either registered trademarks or trademarks of Microsoft Corporation in the U.S. and/or other countries.  
13914-07.03

Reuters uses your data in accordance with Reuters privacy policy in the privacy footer at [www.reuters.com](http://www.reuters.com). Reuters Limited is primarily responsible for managing your data. As Reuters is a global company your data will be transferred and available internationally, including in countries which do not have privacy laws but Reuters seeks to comply with its privacy policy. If you wish to see or correct data held on you or no longer wish to receive information about developments in Reuters Group products and services, such as free trials or events or you wish to change your preferred method of receiving a communication, please email [esupport.global@reuters.com](mailto:esupport.global@reuters.com) writing "Personal Details" in the subject title.

All photos by Reuters.

FOR MORE INFORMATION:

SEND US A SALES ENQUIRY AT  
[www.reuters.com/salesenquiry](http://www.reuters.com/salesenquiry)

READ MORE ABOUT OUR  
PRODUCTS AT  
[www.reuters.com/productinfo](http://www.reuters.com/productinfo)

FIND OUT HOW TO CONTACT  
YOUR LOCAL OFFICE  
[www.reuters.com/contacts](http://www.reuters.com/contacts)